



Imperial Artstetten Castle



Group - Offers 2025



SCHLOSS ARTSTETTEN

Museum

- ❖ Guided tour through museum and family crypt
- ❖ Park-visit on your own

Required time: 2 hrs.

Entrance fee: € 13,90 per person

Guided tour flat rate: € 40,00 per group

Castle´s Nature-park

- ❖ Historical guided tour through the castle´s nature park
- ❖ Museum-visit on your own

Required time: 2 hrs.

Entrance fee: € 13,90 per person

Guided tour flat rate: € 40,00 per group

Castle-Café

- ❖ Coffee and cake or sausage snack in the Castle-Café with a wonderful view around our nature-park

Coffee & cake: € 8,00 per person

Sausage snack & ¼ non-alcoholic Drink: € 11,00 per person

Castle entrance-fee not included!

Private Reception

- ❖ Sparkling wine reception and personal conversation with a family member
- ❖ Guided tour through the museum and crypt
- ❖ Park-visit on your own

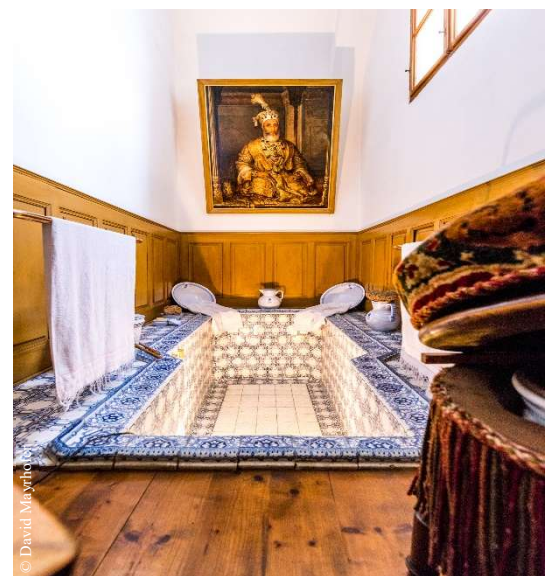
Required time: minimum 2,5 hrs.

Entrance fee and reception in the terrace-salons: € 46,00 per person

Entrance fee and reception in the private representation rooms in the 2nd floor of the castle: € 78,00 per person

Guided tour flat rate: € 40,00 per group

*all packages can be booked for a minimum of 20 people



Artstetten Castle and Melk Abbey

- ❖ Admission to the museum, family crypt and nature-park in Artstetten
- ❖ Admission to the abbey, park and North Bastion of Melk Abbey

Required time:

minimum 3 hrs. (excl. 20 minutes bus-ride)

Combined ticket Artstetten und Melk:

€ 28,90 per person

Guided tour in Artstetten: € 40,00 per group



Artstetten Castle and Ybbs-Persenbeug's visitor power plant

- ❖ Admission to the museum, family crypt and nature-park in Artstetten
- ❖ Guided tour in the visitor power plant

Required time: minimum 3 hrs. (excl. 20 minutes bus-ride)

Combined ticket Artstetten and Ybbs:

€ 21,90 per person

Guided tour in Artstetten: € 40,00 per group



*all packages can be booked for a minimum of 20 people

Events

The Peony Festival

Experience the enchanting Peony Festival on **25th May 2025** at the picturesque Artstetten Castle!

A colourful program awaits young and old: from exciting activities and the fascinating exhibition to entertaining music and theater performances. Let yourself be spoiled by culinary delights and enjoy unforgettable moments amidst the magnificent splendor of the flowers. Come and celebrate with us!

Entrance fee adults: € 18,00

Entrance fee children (5-14,9 years): € 14,00

Additional guided tour through the museum or park: € 40,00 per group





SCHLOSS ARTSTETTEN

Our recommendations for gastronomy and accomodation



www.schlossgasthof.at
3661 Artstetten



www.hotelpritz.at
3644 Emmersdorf



www.freyswirthaus.at
3672 Maria Taferl



Schachner
Wachauf mit allen Sinnen

www.hotel-schachner.at
3672 Maria Taferl



www.heuriger-hold.at
3661 Nussendorf

Our further cooperation partners in the region

schall  **laburg**

www.schallaburg.at
3382 Schallaburg



www.basilika.at
3672 Maria Taferl



Museum der Friedensgemeinde Erlauf

www.erlauferrinert.at
3253 Erlauf



www.oskarkokoschka.at
3380 Pöchlarn



www.leiben.gv.at
3652 Leiben



www.schloss-greinburg.at
4360 Grein



www.gaerten-oberleitner.at
3380 Pöchlarn



www.clam.at
4352 Klam

Opening hours: Group tours with a minimum of 20 persons are possible at any time by appointment!

Season: 1st April till 1st November 2025, daily from 10 a.m. to 4.30 p.m.

Guided tours: The Group rate is valid from 20 persons. Guided tours (max. 20 pers. per group) can only be booked in German, English or French and according to availability also in Czech, Hungarian or Spanish.

The NÖ-Card cannot be used for group offers.

Your tour guide and bus driver visit Artstetten Castle for free!

Contact us:

**Artstetten Castle
A-3661 Artstetten, Schlossplatz 1**

**Tel.: +43 7413 8006, E-Mail: office@schloss-artstetten.at
www.schloss-artstetten.at**

Artstetten Castle is member of:



Wo wir sind, ist oben.

